

AVAILABLE SUPERMARKET WITH BEER AND WINE LICENSE



ADDRESS: CALL FOR DETAILS

OFFERING PRICE

\$3,100,000

CAP RATE

18.10%



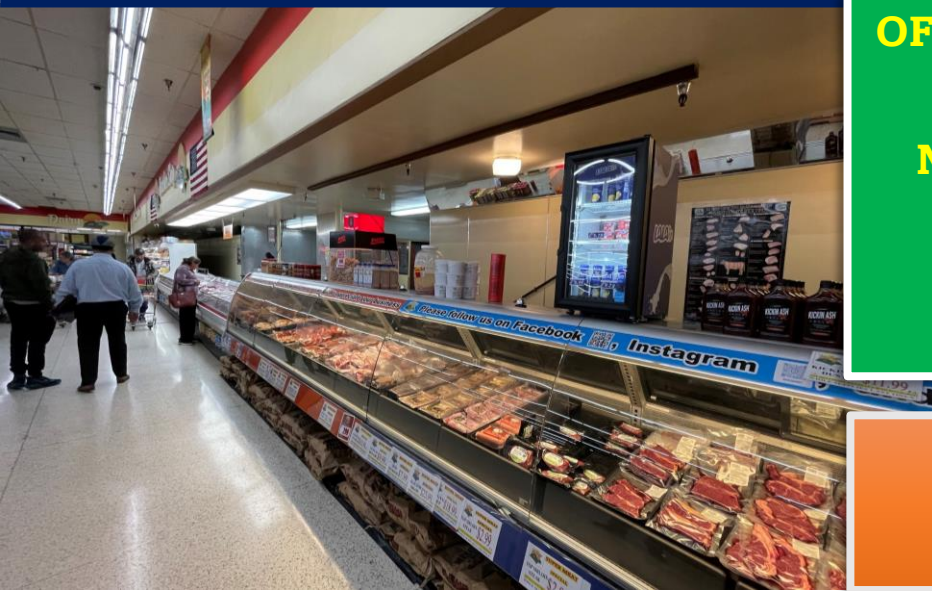
841 Mohawk St, Ste#270 | Bakersfield | CA 93309 | DRE #02213635



ABOUT

SUPERMARKET WITH BEER AND WINE LICENSE

**AMAZING
BUSINESS
OPPORTUNITY**



OFFERING PRICE
\$3,100,000
NET INCOME
\$561,000
CAP RATE:
18.10%



**ADDRESS
CALL FOR
DETAILS**



ABDUL JOBAH, CCIM
DRE: #01463742
CELL: 661-489-1178
AJOBAH@JOBACRI.COM

MUADH SAED
DRE: #02079370
CELL: 661-489-1178
MSAED@JOBACRI.COM

SALAH JOBAH
DRE: #01920825
CELL: 661-489-1178
SJOBACRI@JOBACRI.COM



**COMMERCIAL
CATEGORY**



**45,889
3 Mile**



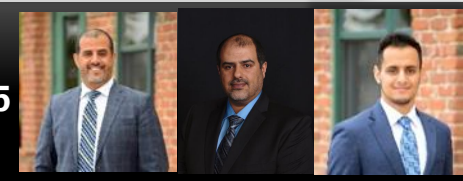
**KERN
COUNTY**



**17,331
ADTV**



841 Mohawk St, Ste#270 | Bakersfield | CA 93309 | DRE #02213635



DESCRIPTION

SUPERMARKET WITH BEER AND WINE LICENSE

AMAZING
BUSINESS
OPPORTUNITY

PLEASE DO NOT DISTURB EMPLOYEES OR SPEAK TO THEM REGARDING THE SALE WHEN VISITING THE LOCATION.

Discover an exceptional investment opportunity with this thriving state market in Kern County, CA. Boasting a prime location and a coveted Type 20 Beer and Wine License, this establishment is poised for continued success in the bustling retail landscape.

Location: Situated in a high-traffic area, this market enjoys excellent visibility and accessibility, drawing in a steady stream of customers.

Type 20 License: With a Type 20 Beer and Wine License in place, the market offers added convenience and versatility, appealing to a diverse customer base.

Financial Performance: Last year's impressive gross sales of \$7,447,307 underscore the market's strong revenue-generating potential. With a gross profit of \$2,015,799 and a net profit of \$561,392, this investment promises substantial returns. [Call our Agent for more details.](#)

Cap Rate: At 18%, the cap rate reflects an attractive return on investment, making this property an enticing prospect for savvy investors seeking lucrative opportunities.

Community Presence: This market has become a staple in the local community, fostering strong customer loyalty and repeat business. By nurturing these relationships and staying attuned to market trends, owners can capitalize on this established goodwill to drive continued success.

Don't miss out on this rare chance to acquire a profitable state market with immense growth potential.



ABDUL JOBAH, CCIM
DRE: #01463742
CELL: 661-489-1178
AJOBAB@JOBABHCRJ.COM

MUADH SAED
DRE: #02079370
CELL: 661-489-1178
MSAED@JOBABHCRJ.COM

SALAH JOBAH
DRE: #01920825
CELL: 661-489-1178
SJOBAB@JOBABHCRJ.COM




841 Mohawk St, Ste#270 | Bakersfield | CA 93309 | DRE #02213635



AT A GLANCE

SUPERMARKET WITH BEER AND WINE LICENSE

**AMAZING
BUSINESS
OPPORTUNITY**

 DEMOGRAPHICS	1 MILE	3 MILE	5 MILE
POPULATION	21,931	45,889	54,009
MEDIAN HH INCOME	\$40,767	\$49,845	\$49,895
AVERAGE HH INCOME	\$60,545	\$69,702	\$69,708

OFFERING PRICE

\$3,100,000

GROSS SALES

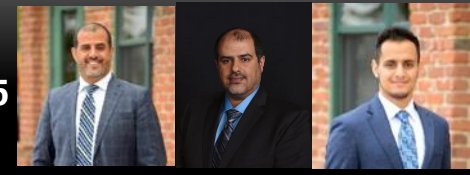
\$7.45 Million



- Exclusive consideration for qualified buyers.
- Requirement for signing a Non-Disclosure Agreement (NDA) before accessing details.
- Verification of funds is essential for prospective buyers before engaging with the seller.



841 Mohawk St, Ste#270 | Bakersfield | CA 93309 | DRE #02213635



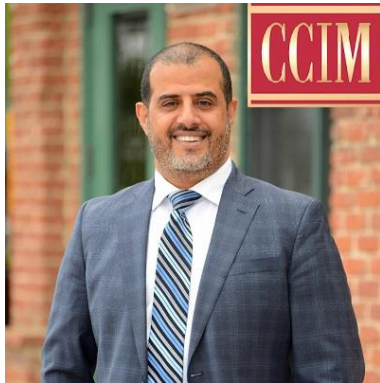
OUR TEAM

SUPERMARKET WITH BEER AND WINE LICENSE

**AMAZING
BUSINESS
OPPORTUNITY**



**841 MOHAWK ST, SUITE#270
BAKERSFIELD, CA 93309
CELL (O) : 661-732-2246
DRE: # 02213635
INFO@ JOBAHCRI.COM**



**ABDUL JOBAH, CCIM
DRE: #01463742
CELL: 661-489-1178
AJOBAH@ JOBAHCRI.COM**



**SALAH JOBAH
DRE: #01920825
CELL: 661-201-3163
SJOBAH@ JOBAHCRI.COM**



**MUADH SAED
DRE: #02079370
CELL: 661-378-2108
MSAED@ JOBAHCRI.COM**

<https://www.jobahcri.com/>



841 Mohawk St, Ste#270 | Bakersfield | CA 93309 | DRE #02213635



DISCLAIMER

SUPERMARKET WITH BEER AND WINE LICENSE

**AMAZING
BUSINESS
OPPORTUNITY**

The information contained in the brochure is proprietary and confidential. The brochure has been prepared to provide an unverified summary of financial, physical, and market information to prospective buyers to enable them to establish a preliminary level of interest in the potential purchase of the Property. It is intended to be reviewed only by the individual or entity receiving it from Jobah's Commercial Real Estate ("Agent"). The agent makes no representation or warranty regarding the Property, including but not limited to income, expenses, or financial performance (past, present, or future); size, square footage, condition, or quality of the land and improvements; presence or absence of contaminating substances; compliance with laws and regulations. The brochure is intended to be used for the purpose of a preliminary evaluation of the subject property. The Materials are not to be considered fact. The information contained in the brochure has been obtained by the Agent from sources believed to be reliable, however, no representation or warranty is made regarding the accuracy or completeness of the Materials. The information contained in the brochure is not a substitute for a thorough investigation of the financial, physical, and market conditions relating to the Property. Any prospective buyer must independently investigate and verify all the information set forth in the Materials. Any prospective buyer is solely responsible for all costs and expenses incurred in reviewing the Materials and/or investigating and evaluating the property.



841 Mohawk St, Ste#270 | Bakersfield | CA 93309 | DRE #02213635

